

# 別墅电梯

Villa Elevator

# V3



伟达电梯有限公司



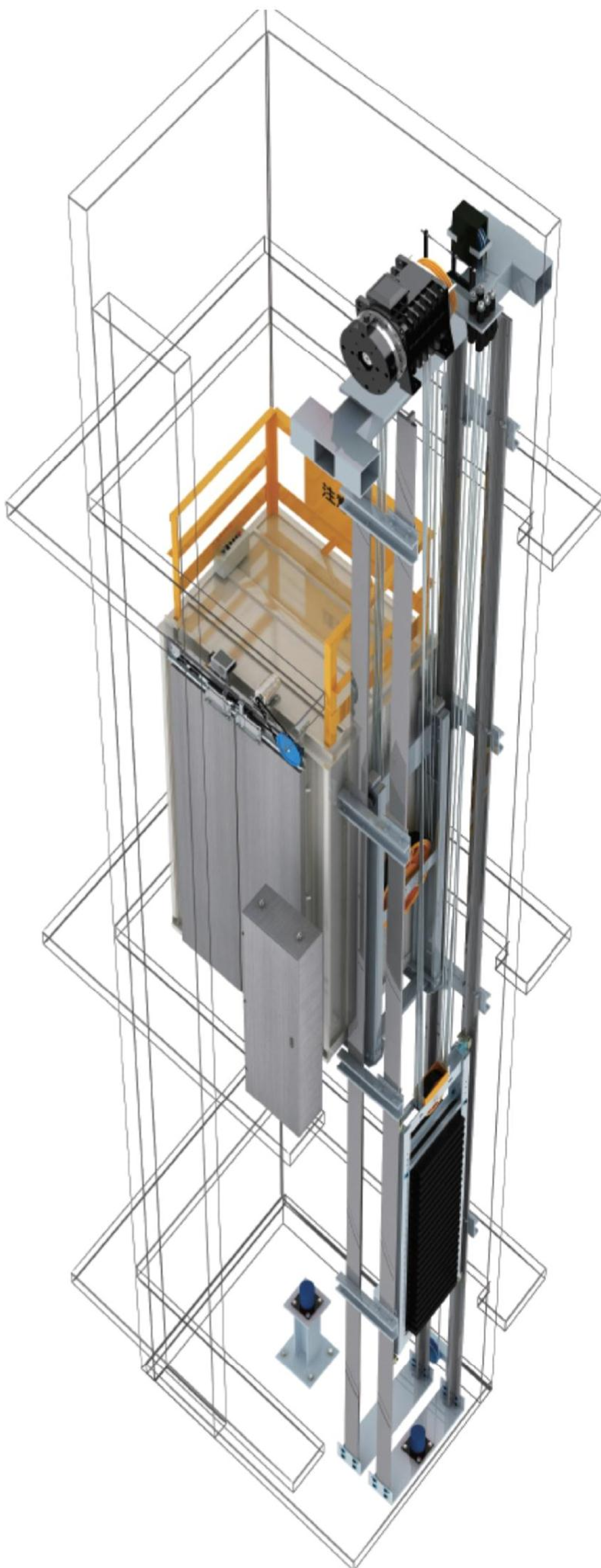
**WELLIFT  
ELEVATOR  
CO., LTD**

## 产品特点

- 无需传统机房, 节省建筑空间及成本
- 曳引比2:1, 特殊设计的龙门轿架系统
- VVVF驱动技术, 采用专用微机板控制, 舒适平稳
- 主机采用220V或380V专用曳引机, 更专业, 更高效
- 专用曳引机机架, 固定于导轨, 建筑物可不承受力
- 节能环保, 外观简约大方, 同时在减振方面有独到之处

## 主要部件

### Key Components



## Product Features

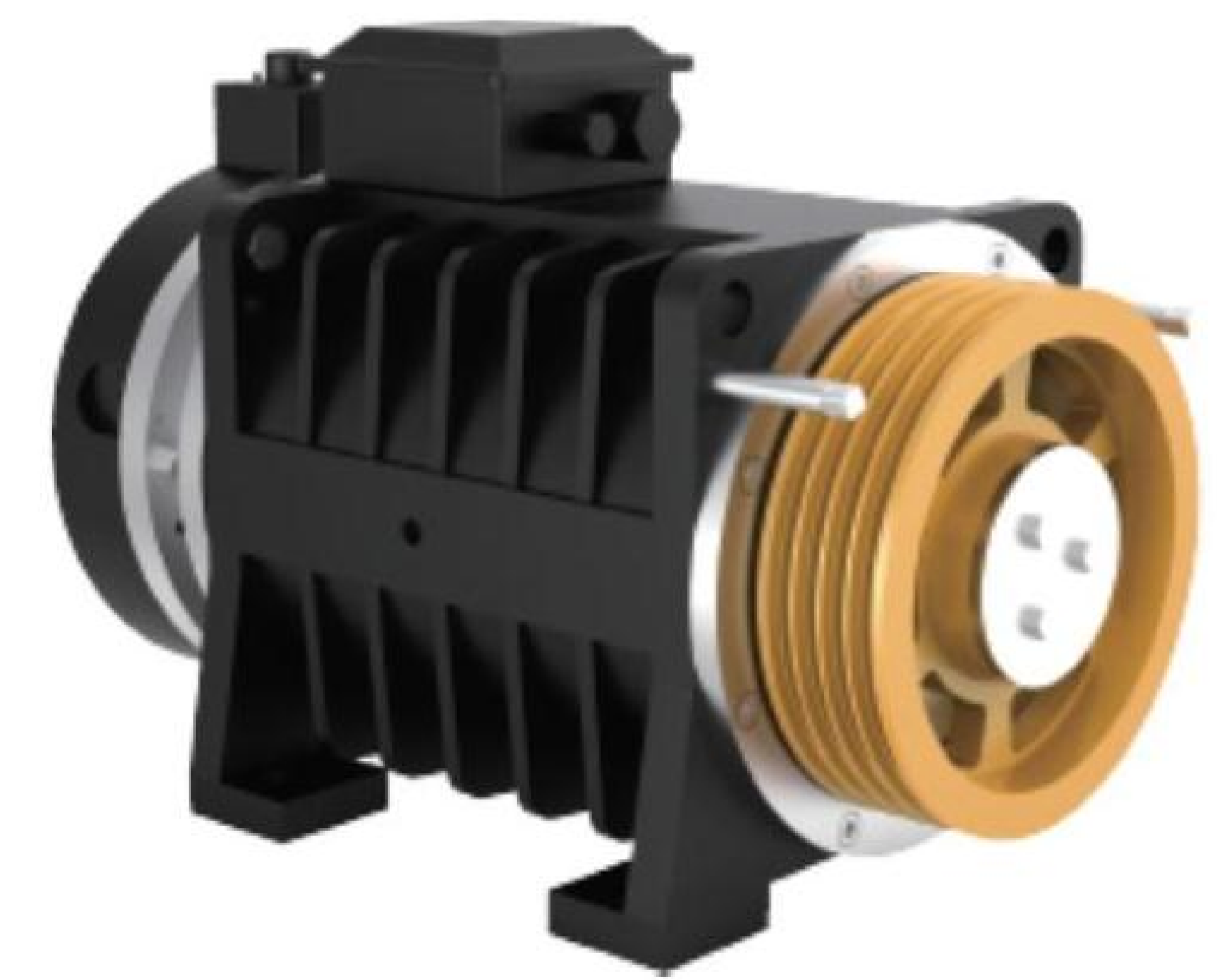
- Machine roomless design saves construction cost
- Specially designed car sling with 2:1 roping
- VVVF drive, micro-controller, smooth and comfortable
- 220V or 380V specialized motor which is more professional and effective
- Special traction machine bracket fixed on guide rail that assures no pressure on shaft wall
- Excellent at energy saving with simple outer looking and vibration proof

### 永磁无齿轮曳引机

#### PM Gearless Traction Machine

别墅梯专用曳引机,  $\Phi 240$ 轮径及独特结构, 使主机整体高度降低, 减少对顶层的要求。

Special - purpose traction machine for villa elevator, the motor has  $\Phi 240$  wheel diameter and its unique structure lowered the total height of the motor and reduces the overhead requirement.

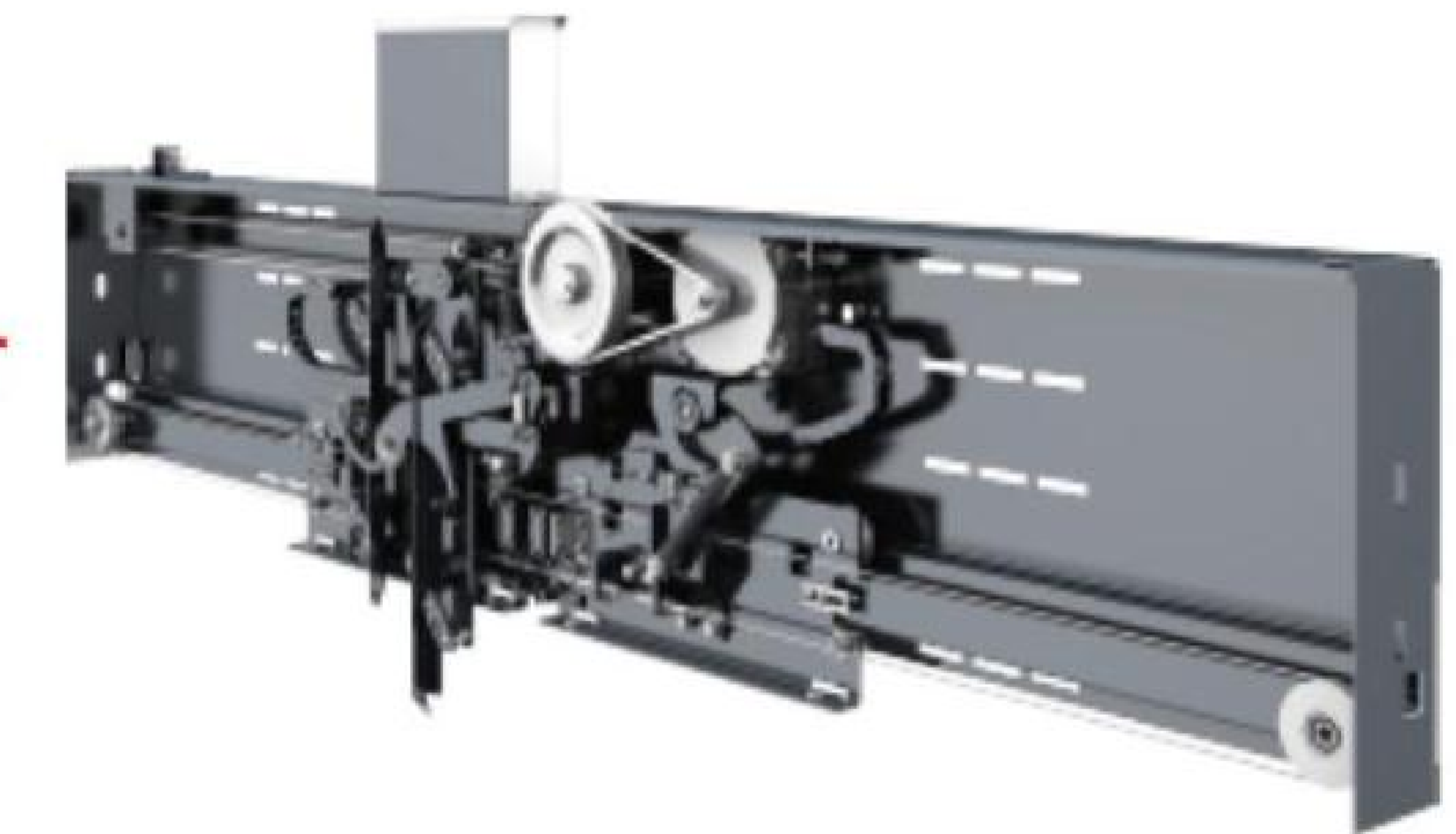


### 中分变频门机

#### Center Opening VVVF Door Operator

采用VVVF变频技术, 运行平稳可靠, 噪音更小。

Adopts VVVF technology and it ensures noiseless and smooth operation.



### 全串行别墅梯控制柜

#### Full Serial Villa Elevator Controller

采用FPGA + DSP控制平台, 强大的数据处理能力, 超强抗干扰设计, 电梯控制和驱动控制同时具有安全保护功能, 使电梯可靠性与稳定性无与伦比。2.2KW小功率, 专为别墅梯设计。

Adopts FPGA + DSP control platform with strong data processing capacity, anti-interference design, safety protections for both elevator control and drive system control, which ensure the super reliability and stability of our home elevator. 2.2kw low power is specially designed for villa elevator.



# 轿厢设计

## Cabin Design

别墅电梯部件配套轿厢采用新材料、新工艺装潢, 充满时尚元素, 美观、实用。各种喷涂钢板、镜面、发纹、和纹、蚀刻不锈钢应有尽有, 可根据建筑的不同风格需要, 自由选择搭配。

Villa elevator cabin uses new materials, new craft decoration, it's fashionable, beautiful and useful. Excellent choices for users, that ranges from various painted steel, mirror stainless steel, hairline stainless steel, vibration stainless steel, etching stainless steel, etc.. You may choose the finishing matches that suits the building design.



### WT-180

标配 Standard

吊顶: 发纹不锈钢一体式, LED筒灯照明  
轿壁: 发纹不锈钢  
地板: PVC  
扶手: 不锈钢扶手  
操纵盘: 发纹不锈钢面板, 轻触式按钮

Ceiling: Integrated Hairline Stainless Steel Frame  
LED Spot Lights  
Cabin: Hairline stainless steel  
Floor: PVC  
Handrail: Hairline stainless steel  
COP: Hairline stainless, Push touch button



# 轿厢设计 Cabin Design



## WT-189

选配 Optional

吊顶: 镜面不锈钢一体式, LED筒灯+LED日光灯照明  
轿壁: 三侧中间片彩纹金属(木纹化妆钢板)+其它镜面不锈钢  
地板:大理石材质  
扶手: 镜面不锈钢扶手  
操纵盘: 镜面不锈钢面板, 轻触式按钮

Ceiling: Integrated Mirror Stainless Steel Frame  
LED Spot Lights + Fluorescent Tube  
Cabin: Middle panels of 3 sides wall is colored metal sheet (wooden making stainless steel) + other parts are mirror stainless steel  
Floor: Marble  
Handrail: Mirror Stainless Steel  
COP: Mirror Stainless Steel, Push Touch Button

## 人机界面 Interface

按照人体工程学设计的轿厢操纵箱, 反应灵敏, 操作方便自如; 层站显示器清晰、迅捷地显示各种数码和符号。

Ergonomic COP Design with high resolution convenience for operation & better sensitivity ensu the entire feeling comfortable.

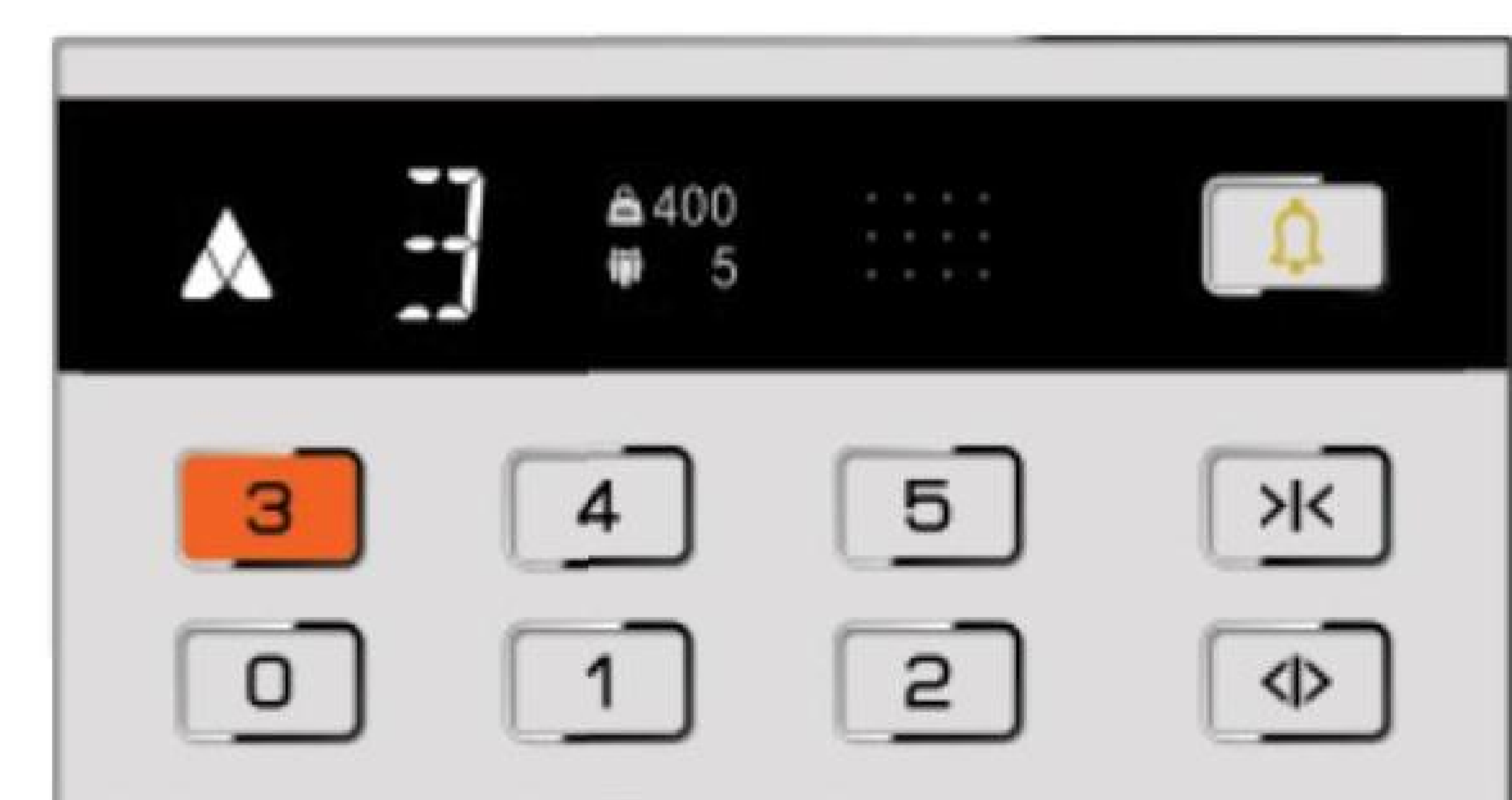
标配  
Standard



COP820

HOP820

选配  
Optional



CEE100



LSE100

# 装潢选型 Finishing Options

## 厅门 Landing Door



钢板喷塑  
Painted Steel



发纹不锈钢  
Hairline Stainless Steel

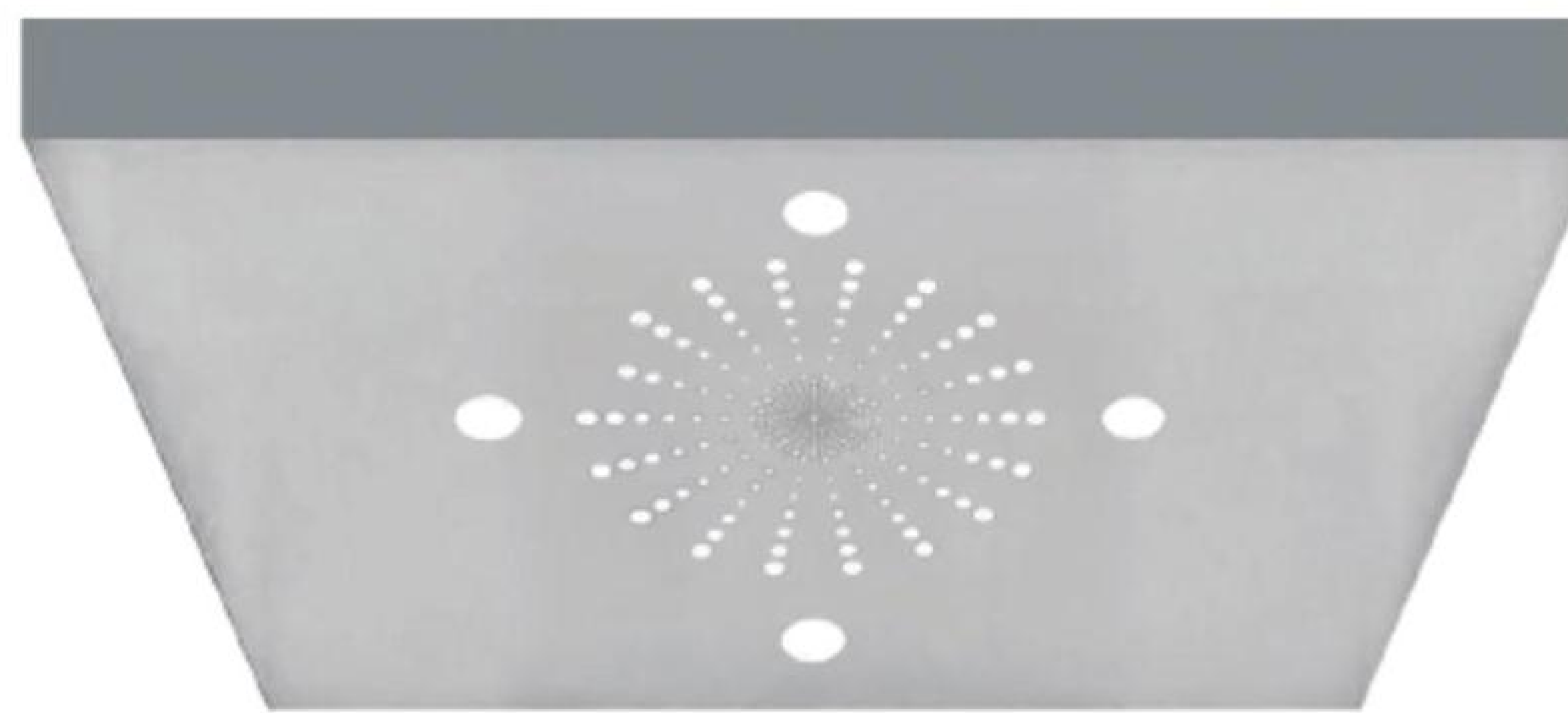


玫瑰金发纹不锈钢  
Rose Golden  
Hairline Stainless Steel



玻璃观光  
Panoramic

## 吊顶 Ceiling

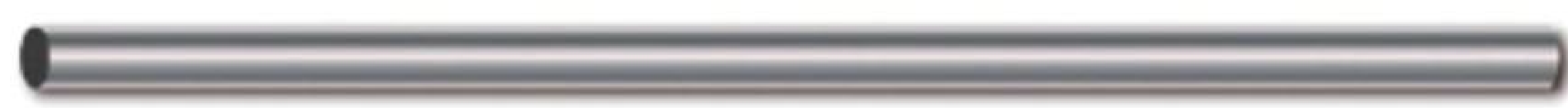


SLD-290



SLD-273

## 扶手 Handrail



SL-368



SL-304

## 地板 Floor



SL-501

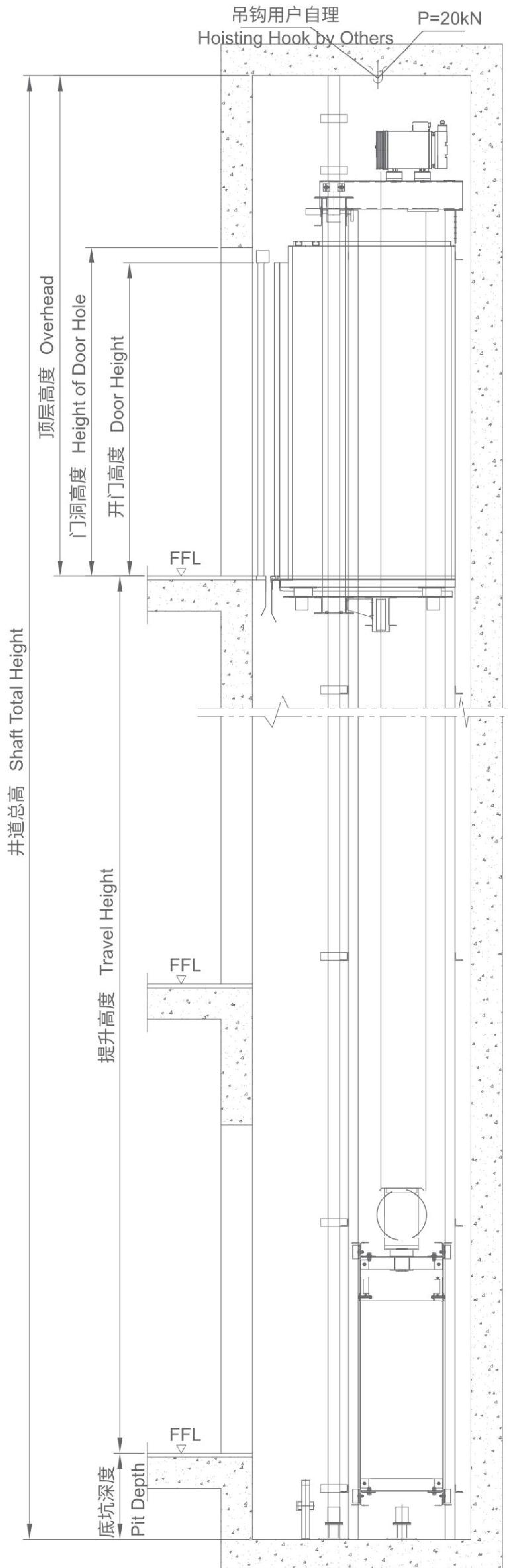


YP-58

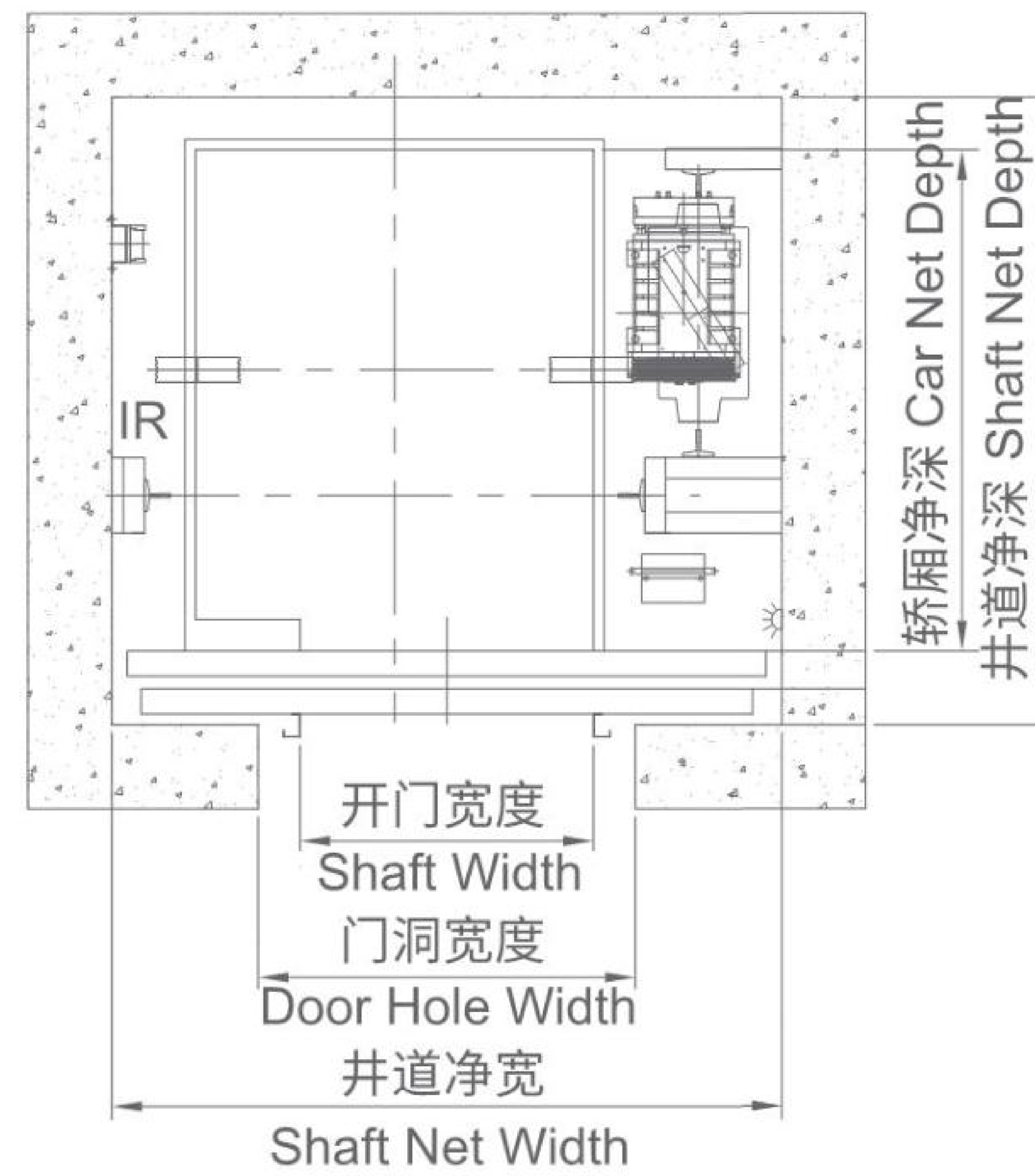
# 土建参数

## Shaft Construction Plan

井道立面布置图  
Shaft Elevation Layout



井道平面布置图  
Shaft Layout



### 别墅电梯(对重侧置)

#### Villa Elevator (CWT On Side)

额定载重 (kg) Load	320	400
速度 (m/s) Speed	0.4	0.4
轿厢宽度AA(mm) Car Width	900	950
井道宽度AH(mm) Door Net Width	1600	1600
轿厢深度BB(mm) Car Depth	1100	1200
井道深度BH(mm) Shaft Depth BH(mm)	1400	1500
轿厢高度(mm) Car Height	2110	2110
最小顶层高度(mm) Minimum Overhead	3200	3200
最小底坑深度(mm) Minimum Pit Depth	550	550
开门宽度JJ(mm) Open the Door Width	700	700
开门方式 Door Opening Type	中分 Center Opening	中分 Center Opening
最大提升高度 (m) Max. Travel	12	12
最大层站数 Max. Floor	5	5
最小楼层高度(mm) Mini.Floor Height	2700	2700
动力电源(V,Hz) Main Power Supply	380/220V, 50HZ	380/220V, 50HZ
照明电源(V,Hz) Lighting Power Supply	220V, 50HZ	220V, 50HZ

轿厢高度和开门尺寸可根据用户现场土建允许的条件做适度调整  
Dimension of cabin and opening door can be customized according to the actual site condition

# 功能表

## Functions

- B 标准功能 Standard Function  
O 可选功能 Optional Function

### 安全功能 Safety Features

#### 拯救及故障监测 Fault Detection

<span style="border: 1px solid black; border-radius: 50%; padding: 2px;">B</span> 主机过热保护	Motor Overheating Protection	<span style="border: 1px solid black; border-radius: 50%; padding: 2px;">B</span> 禁止开门开关	Forbidden Switch of Door Opening
<span style="border: 1px solid black; border-radius: 50%; padding: 2px;">B</span> 安全回路分段检测	Subsection Inspection of Safety Circuit	<span style="border: 1px solid black; border-radius: 50%; padding: 2px;">B</span> 限速器张紧安全触点	Speed Governor Tension Safety Contacts
<span style="border: 1px solid black; border-radius: 50%; padding: 2px;">B</span> 总电源开关箱	Main Power Switch Box	<span style="border: 1px solid black; border-radius: 50%; padding: 2px;">B</span> 轿门触点	Car Door Contacts
<span style="border: 1px solid black; border-radius: 50%; padding: 2px;">B</span> 运行小时累计	Running Hours Cumulating	<span style="border: 1px solid black; border-radius: 50%; padding: 2px;">B</span> 轿厢照明主开关盒主保险——控制柜内	Car Lighting Main Switch Box Main Fuse Inside of Controller Box
<span style="border: 1px solid black; border-radius: 50%; padding: 2px;">B</span> 轿厢位置开关	Car Positioning Switch	<span style="border: 1px solid black; border-radius: 50%; padding: 2px;">B</span> 底坑撑杆触点	Pit Brace Rod Contacts
<span style="border: 1px solid black; border-radius: 50%; padding: 2px;">B</span> 轿厢紧停开关·轿顶	Car Emergency Stop Switch·Car Top	<span style="border: 1px solid black; border-radius: 50%; padding: 2px;">B</span> 轿顶撑杆触点	Car Top Brace Rod Contacts
<span style="border: 1px solid black; border-radius: 50%; padding: 2px;">B</span> 轿厢紧停开关·底坑	Car Emergency Stop Switch·Pit	<span style="border: 1px solid black; border-radius: 50%; padding: 2px;">B</span> 电动松闸功能	Electrical Brake Releasing Function
<span style="border: 1px solid black; border-radius: 50%; padding: 2px;">B</span> 安全钳安全触点	Safety Gear Safety Contact	<span style="border: 1px solid black; border-radius: 50%; padding: 2px;">B</span> 紧急轿厢照明	Car Emergency Light
<span style="border: 1px solid black; border-radius: 50%; padding: 2px;">B</span> 限速器安全触点	Speed Governor Safety Contacts	<span style="border: 1px solid black; border-radius: 50%; padding: 2px;">O</span> 断电紧急平层ARD	ARD
<span style="border: 1px solid black; border-radius: 50%; padding: 2px;">B</span> 电梯主开关·控制柜内	Main Switch·Inside Controller Box	<span style="border: 1px solid black; border-radius: 50%; padding: 2px;">B</span> 应急电话(一键拨号电话)	Emergency Call(One Digit Dial Telephone)

### 信息功能 Information Function

#### 厅外信息显示 Landing Information Display

<span style="border: 1px solid black; border-radius: 50%; padding: 2px;">B</span> 外呼登陆显示灯	Landing Call Indicating Light
<span style="border: 1px solid black; border-radius: 50%; padding: 2px;">O</span> 各层均有方向箭头, 层位显示	Travelling Direction Indicators at Every Floor, Floor Number Display

#### 轿内信息显示 Inside Cabin Information Display

<span style="border: 1px solid black; border-radius: 50%; padding: 2px;">B</span> 内呼登陆显示灯	COP Call Indicating Light
<span style="border: 1px solid black; border-radius: 50%; padding: 2px;">B</span> 超载功能图案及蜂鸣器	Overload Symbol & Buzzer
<span style="border: 1px solid black; border-radius: 50%; padding: 2px;">B</span> 轿厢位置指示	Car Position Display
<span style="border: 1px solid black; border-radius: 50%; padding: 2px;">B</span> 运行方向指示	Travelling Direction Indicators

#### 监控信息 CCTV Camera

<span style="border: 1px solid black; border-radius: 50%; padding: 2px;">B</span> 门区指示灯	Door Zone Indicating Light
<span style="border: 1px solid black; border-radius: 50%; padding: 2px;">B</span> 运行次数累计	Running Times Accumulating
<span style="border: 1px solid black; border-radius: 50%; padding: 2px;">B</span> 一般故障信号	Normal Fault Signal

### 舒适功能 Comfort Functions for Passengers

#### 出入轿厢 Entering & Exit Cabin

<span style="border: 1px solid black; border-radius: 50%; padding: 2px;">B</span> 开门按钮	Door Opening Button
<span style="border: 1px solid black; border-radius: 50%; padding: 2px;">B</span> 关门按钮	Door Closing Button
<span style="border: 1px solid black; border-radius: 50%; padding: 2px;">B</span> 光幕	Light Curtain

#### 运行舒适度 Comfortable Running

<span style="border: 1px solid black; border-radius: 50%; padding: 2px;">B</span> 轿内照明	Car Lighting
<span style="border: 1px solid black; border-radius: 50%; padding: 2px;">B</span> 轿内风扇	Fan
<span style="border: 1px solid black; border-radius: 50%; padding: 2px;">O</span> 背景音乐/语音报站	Background Music / Voice Announcer

#### 滥用/误用保护 Misusage Protection

<span style="border: 1px solid black; border-radius: 50%; padding: 2px;">B</span> 二次按钮取消错误内呼	Calling Cancellation by 2 Times Button Pressing on COP
<span style="border: 1px solid black; border-radius: 50%; padding: 2px;">B</span> 按钮黏滞监察	Viscous Button Monitoring
<span style="border: 1px solid black; border-radius: 50%; padding: 2px;">B</span> 反向内呼	Opposite Direction Calling on COP

### 控制功能 Control Functions

#### 优先/特殊服务功能/特殊功能 Prior / Special Service Functions / Special Functions

<span style="border: 1px solid black; border-radius: 50%; padding: 2px;">B</span> 禁止外呼	Landing Call Forbidden	<span style="border: 1px solid black; border-radius: 50%; padding: 2px;">B</span> 测试运行	Testing Running
<span style="border: 1px solid black; border-radius: 50%; padding: 2px;">B</span> 自动门	Auto Door	<span style="border: 1px solid black; border-radius: 50%; padding: 2px;">O</span> 残疾人使用功能(盲人按钮, 语音提示)	Functions for Disabled (Braille Button, Voice Announcer)
<span style="border: 1px solid black; border-radius: 50%; padding: 2px;">B</span> 各层开关门时间可统一调节	Door Opening and Closing Timing at Each Floor, Unified Regulation	<span style="border: 1px solid black; border-radius: 50%; padding: 2px;">B</span> 外呼再开门	Re-Opening Door When Landing Call
<span style="border: 1px solid black; border-radius: 50%; padding: 2px;">B</span> 检修运行	Inspection Running	<span style="border: 1px solid black; border-radius: 50%; padding: 2px;">O</span> 贯通门	Through Opening Door
<span style="border: 1px solid black; border-radius: 50%; padding: 2px;">B</span> 紧急召回	Emergency Returning	<span style="border: 1px solid black; border-radius: 50%; padding: 2px;">O</span> 可选开门(如有通门)	Optional Door is Available (If It is Through Opening)



---

厦门市思明区世茂海峡大厦A栋3503室  
Room 3503, Tower A, Shimao Strait Building, Xiamen, China.  
Tel: 0086-592-5166666 Email: info@wellift.com

[www.wellift.com](http://www.wellift.com)